



**BOSCH**

**Diesel Center**

**DIESELTECH PTE LTD**

BRN: 198903179C

Address: 28F, Penjuru Close, #01-11, Singapore 609134

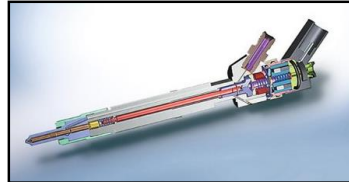
Tel: +65-6760 6666

Fax: +65-6264 0320

Website: www.dieseltech.com.sg

Email: service@dieseltech.com.sg

## **Warning! Don't play play with Common Rail Repair!**



At **DIESELTECH**, you will be assured of **QUALITY** repair from a Bosch Diesel Centre

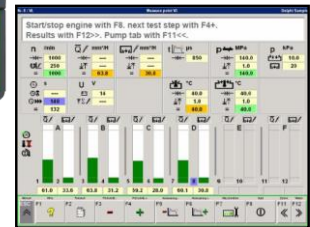
### **QUALITY** common rail repair means:

- ~ **Q**ualified & authorised repair
- ~ **U**nsurpassed customer service & support
- ~ **A**dvanced technology testing & calibration
- ~ **L**ast as good & long as new
- ~ **I**temised parts replacement
- ~ **T**ip-top fuel injection & engine performance
- ~ **Y**ields more with reasonable cost



Testing on a Bosch EPS708

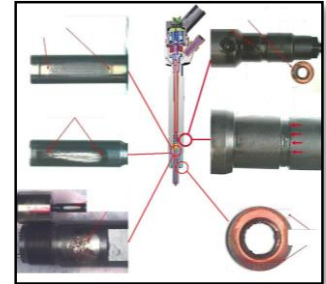
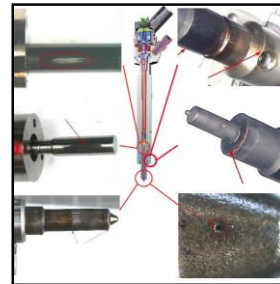
with real time test results



**UNAUTHORISED, UNQUALIFIED OR NO-SPEC REPAIR** results in **INFERIOR** consequences

### **INFERIOR** common rail repair means:

- ~ **I**nadequate repair methods
- ~ **N**o test result and report
- ~ **F**ailure rate high
- ~ **E**ngine overall performance unstable
- ~ **R**e-usage of old (and worn) parts
- ~ **I**nsufficient technical support
- ~ **O**nly 'clean and assemble back'
- ~ **R**esults in smoky emission



The consequences of inferior repair



### **Don't say we never say!**

Why will you want to put your vehicle or engine at risk with inferior repair?  
 Inferior repair may be cheap initially but may eventually cost more with many downtime from stoppages and rectifications.

**At Dieseltech, we do not undersell QUALITY. Contact us now!**



**BOSCH**



**Garrett**



**BorgWarner Turbo Systems**



**MITSUBISHI TURBOCHARGER**

**IHI**